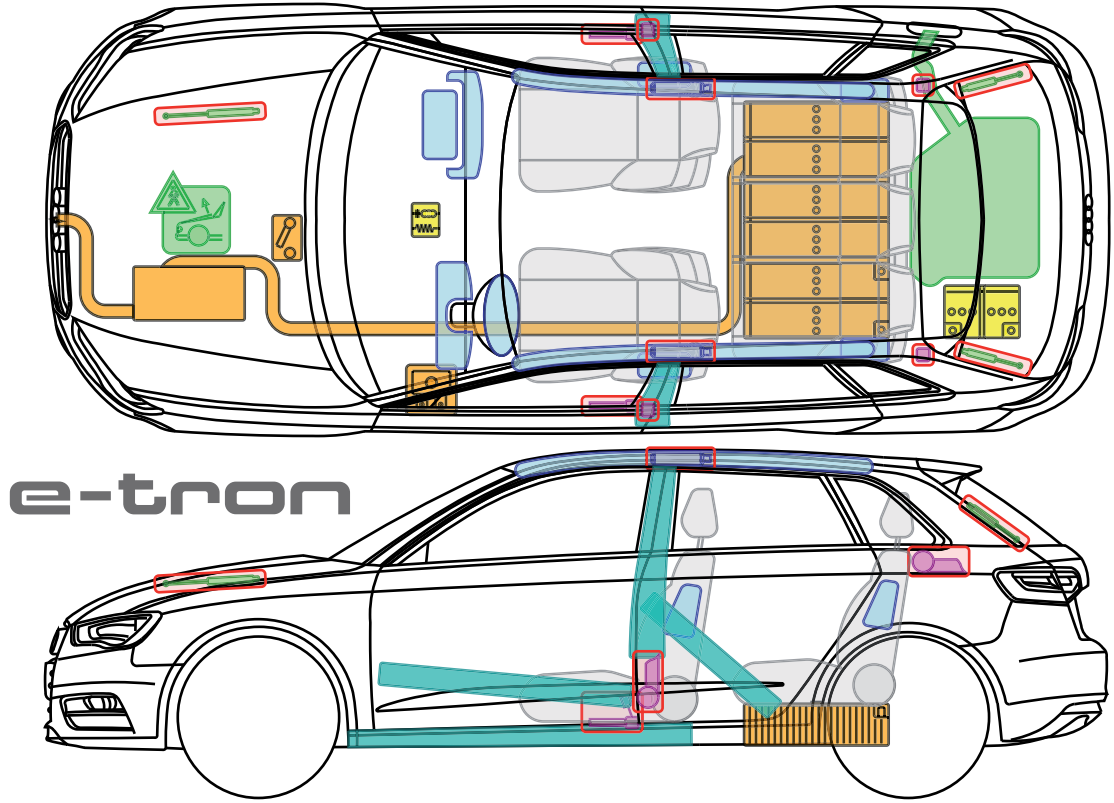




▶ Audi A3 Sportback e-tron

from 2014



e-tron

Legend

	Airbag		Overroll protection		Fuel tank		High-voltage emergency disconnect
	Gas generator		Gas-pressure damper		High-voltage battery		Pedestrian protection system
	Pre-tensioner		Control module		High-voltage leads/components		
	Reinforcement		12 V battery		High-voltage emergency disconnect fuse		

This document is a subject to the copyright of AUDI AG, Ingolstadt. Any duplication, distribution, storage, communication, broadcast and reproduction or transmission of the contents without written approval from AUDI AG is prohibited.



▶ Audi A3 Sportback e-tron

from 2014

Characteristic features

The A3 e-tron can be identified by the e-tron logo, the orange cables (e. g. in engine compartment) and the charging socket.



e-tron

Vehicle immobilization

1. Gear lever in position park „P“
2. Apply parking brake



Switch off ignition

Press START-ENGINE-STOP button **without** depressing brake pedal.



⚠ Warning: When pressing the START-ENGINE-STOP button and depressing the brake pedal at the same time, the engine will start!

A3 Sportback e-tron



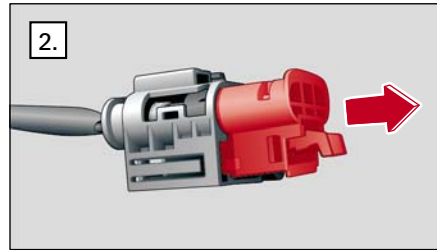
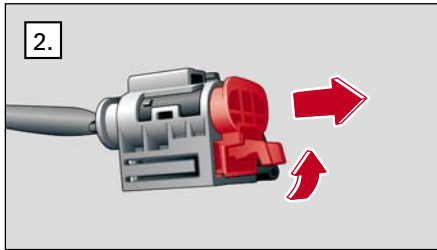
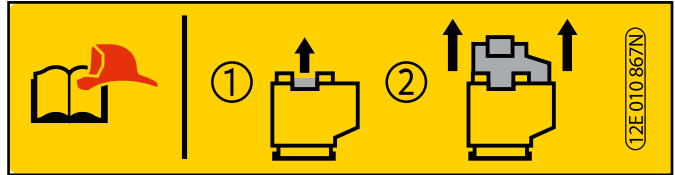
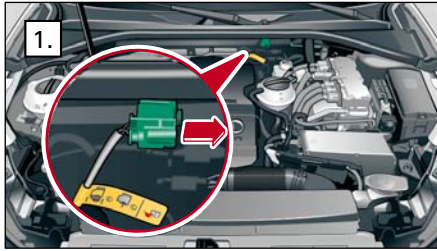
▶ Audi A3 Sportback e-tron

from 2014

Deactivation of High Voltage System

Alternative 1 – Engine compartment accessible

1. Localize emergency disconnect
2. Open safety disconnect

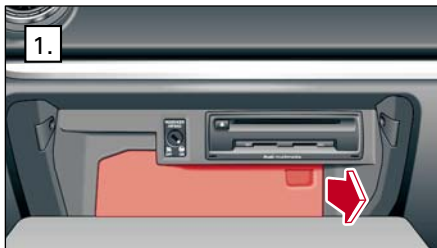


Alternative 2 – Emergency disconnect fuse in passenger compartment

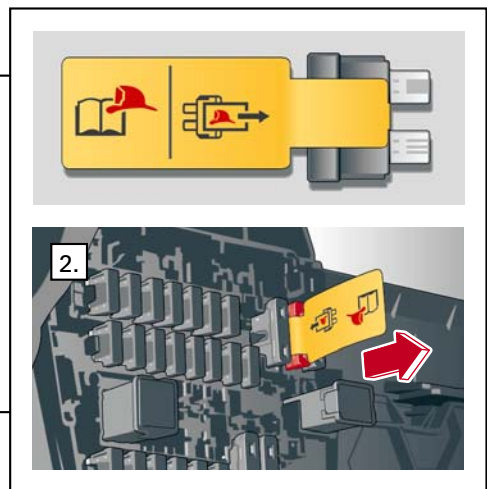
1. Identify emergency fuse
2. Disconnect emergency fuse



Fuse box – **left-hand drive** (steering wheel left)



Fuse box in glove compartment **right-hand drive** (steering wheel right)



A3 Sportback e-tron

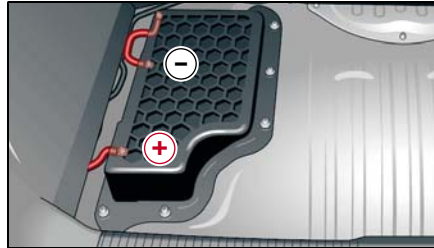


▶ Audi A3 Sportback e-tron

from 2014

Disconnect 12 V battery

The 12 V battery is located in the luggage compartment below the luggage compartment floor. The cables of both terminals are fed out directly through the plastic cover.



Disconnect charging cable

Vehicle connected to charging station:

1. Unlock vehicle via remote control or central locking switch
2. Disconnect charging cable

If required, follow further steps of this rescue data sheet

