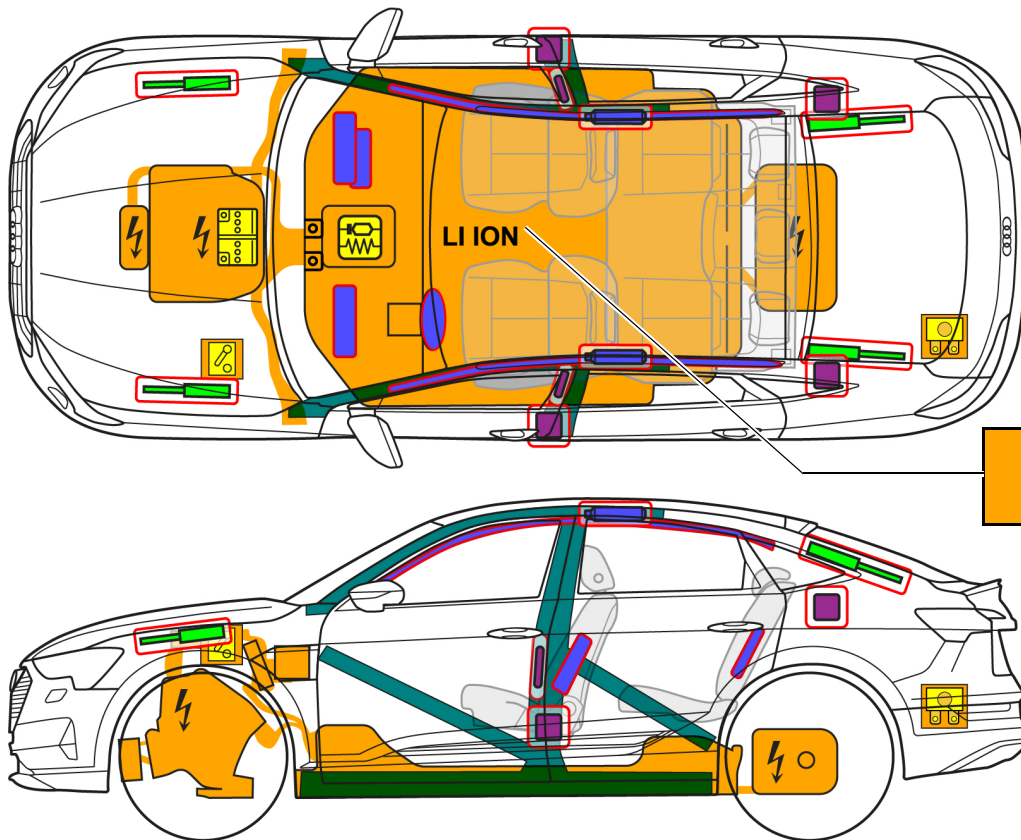




Audi e-tron

SUV incl. Sportback, as of 2020



Note: The illustration shows the maximum possible range of equipment.

| | | | | | | | | | |
|--|---------------------------------------|--|---|--|-------------------------|--|---|--|-------------------------------------|
| | Airbag | | Stored gas inflator | | Seat belt pretensioner | | SRS control unit | | Pedestrian protection active system |
| | Automatic roll-over protection system | | Gas strut / preloaded spring | | High-strength zones | | Special attention | | |
| | Battery, low-voltage | | Ultra-capacitor, low-voltage | | Fuel tank | | Gas tank | | Safety valve |
| | Battery, high-voltage | | Power cable, high-voltage | | Separator, high-voltage | | Fuse box, disabling high-voltage system | | Ultra-capacitor, high-voltage |
| | High-voltage separator to low voltage | | Fuse box, disabling high-voltage to low voltage | | High-voltage component | | | | |



1. Identification / recognition



The electric motor is silent. The display on the left of the instrument cluster (power meter) indicates whether the electric drive is switched "OFF" or "READY" for operation.

Charging port



Logo

e-tron



Engine compartment (orange cable)



e-tron Sportback

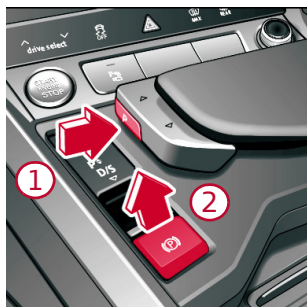


e-tron

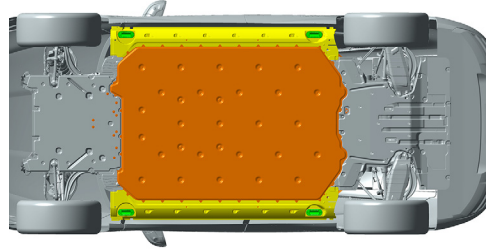
2. Immobilization / stabilization / lifting


Immobilize the vehicle

Press the Park button "P" and apply the parking brake



Lifting points



 Suitable lifting points

 High-voltage battery

Switch ignition off (power meter display "Off")

Press the START-STOP button without depressing the brake pedal

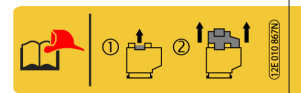
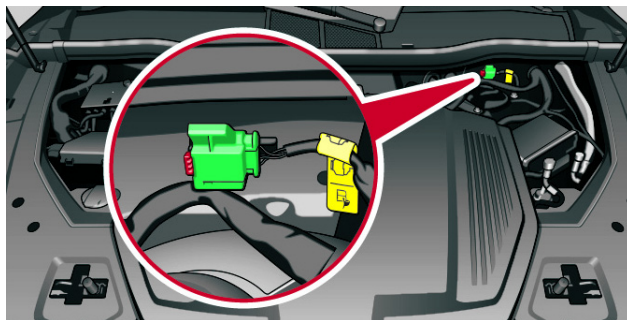


3. Disable direct hazards / safety regulations

Deactivate the high voltage system



Option 1: (Separation point in engine compartment)



① Pull out red tab

② Pull out black connector





Audi e-tron

SUV incl. Sportback, as of 2020

Option 2: (Fuse in trunk)
Raise underbody **Remove flap** **Pull out fuse**

Do not touch, cut or open high voltage components or the high-voltage battery. Wear suitable safety equipment.

In the event of an accident in which the airbags are deployed, the high-voltage system will be automatically deactivated. The high-voltage system is de-energized approx. 20 seconds after deactivation.

Disconnect the 12-volt battery

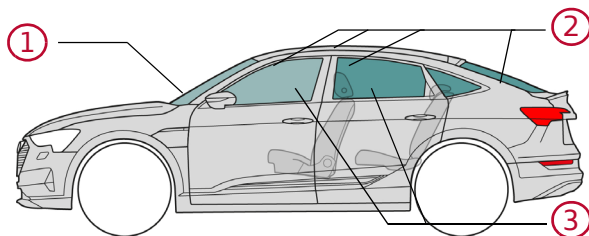
The 12-volt battery is located at the front end of the vehicle under the plenum chamber cover.

The black battery earth cable is bolted to the body either at the front plenum chamber wall (1) or at the suspension strut (2). The earth connection (negative terminal) of the battery can be separated from the body contact point here.

Separate from charging station (emergency release)

Remove the cover **Pull the yellow loop** **Disconnect the charging connector**

4. Access to the occupants



- Glass types:**
- ① Composite safety glass
 - ② Single-layer safety glass
 - ③ Side windows, optional Composite safety glass

5. Stored energy / liquids / gases / solids



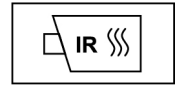
400 V



12 V



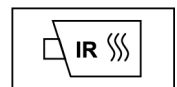
There is a risk of a thermal reaction in the high-voltage battery if coolant escapes from the battery cooling system. Monitor the temperature of the high-voltage battery.



6. In case of fire



Lithium-ion batteries can self-ignite spontaneously, sometimes several hours after an event causing damage or the result of incorrect use, and can re-ignite after a fire has been suppressed. Wear suitable safety equipment.



7. In case of submersion

After recovering the vehicle from the water, deactivate the high-voltage system (see Section 3) and allow the water to drain off. Wear suitable safety equipment.

8. Towing / transportation / storage



Lithium-ion batteries can self-ignite, or re-ignite after a fire has been extinguished.



If the vehicle has been involved in an accident or if the HV battery is damaged or appears to be damaged: Deactivate the high-voltage system (see Section 3). Park the vehicle at a safe distance, at least 5 m, from buildings and other vehicles (quarantine area).



Do not tow a vehicle that has been involved in an accident on its drive axles.



9. Important additional information

10. Explanation of pictograms used

| | | | | | | | |
|---|---------------------|------------------------|---------------------------|----------------------------|-----------------------------|----------------------|-----------------|
| | | | | | | | |
| Flammable | Explosive | Caustic, skin irritant | Hazardous to human health | Environmental hazard | Electric vehicle | Warning High voltage | Caution, danger |
| | LI ION | | | | | | |
| Use lots of water to extinguish the fire. | Lithium-ion battery | Dangerous voltage | Release the bonnet | Unlock luggage compartment | Use thermal infrared camera | Remove smart key | |